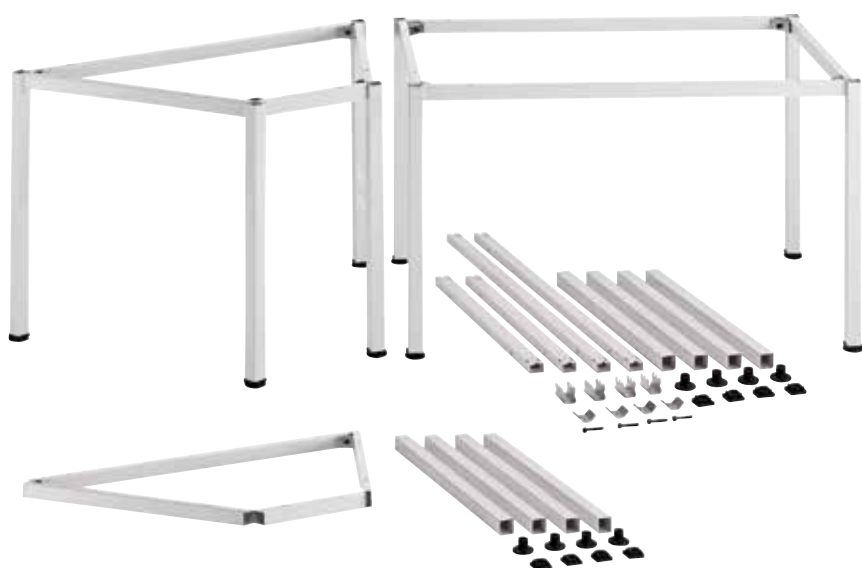


3500-3700



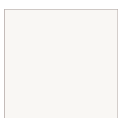
3500 - 3700

Design: OMP R&D

I telai per tavoli sono in metallo verniciato con polveri epossidiche disponibili nelle finiture verniciate colore alluminio gofrato, cromata, bianca o nera. La loro versatilità sta nel fatto che si possono montare con estrema facilità e che si prestano ad aggregazioni complesse grazie alle diverse forme disponibili.

The table frames are made of powder coated metal with embossed aluminium, chromium-plated, white and black finish. Versatility is an important feature: they are very easy to fit and, due to the different shapes available, can be combined in many complex ways.

colori - colours



AC20
Verniciato gofrato
bianco
Embossed white
painted



AC01
Cromato
Chromium-plated



AC37
Alluminio gofrato
Embossed aluminium

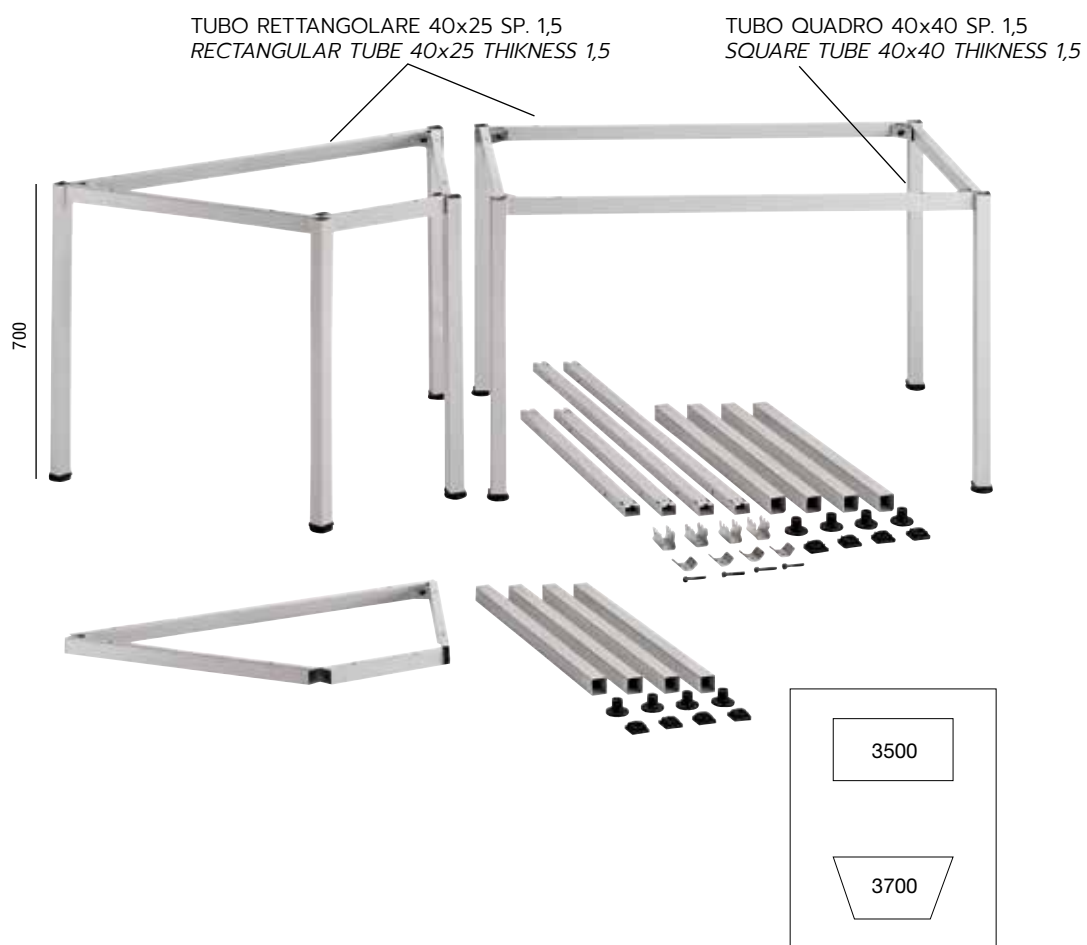


AC03
Nero gofrato
Embossed black

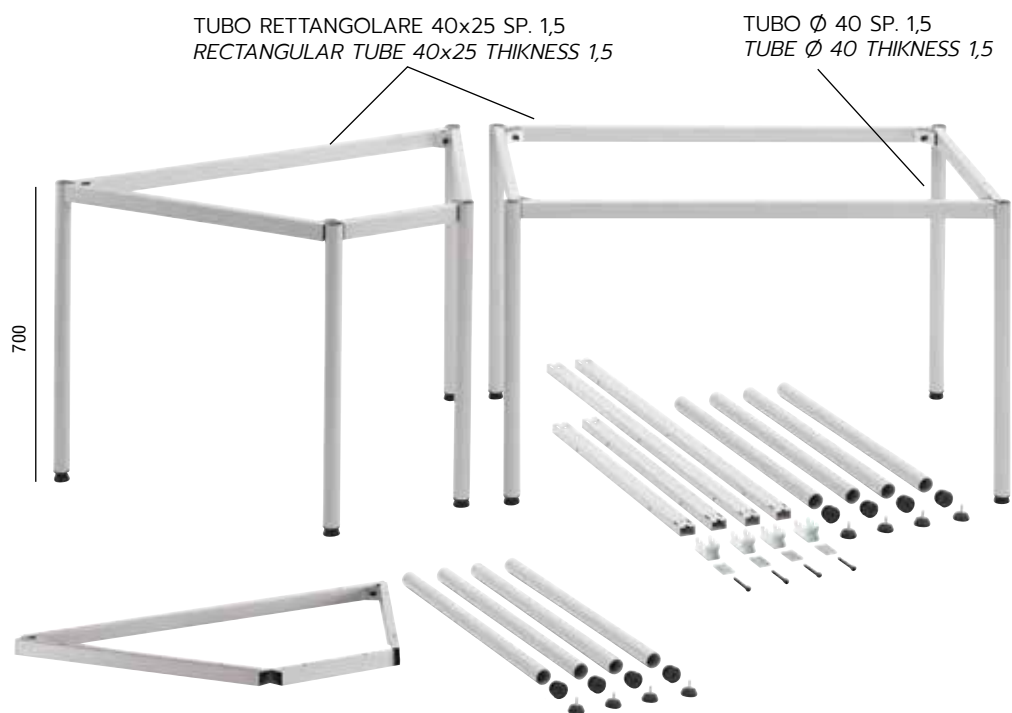


3500 - 3700

TUBO QUADRO - SQUARE TUBE



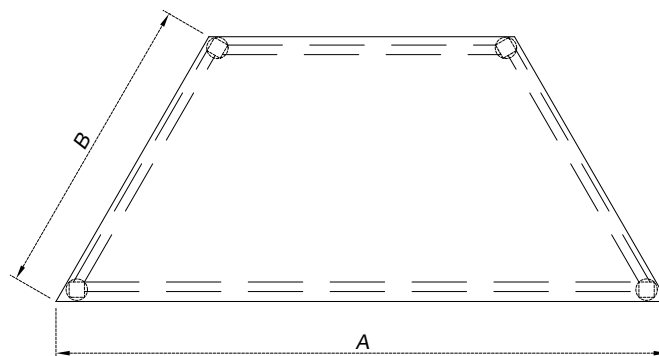
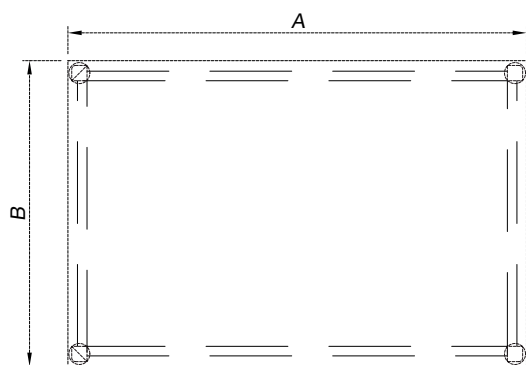
TUBO TONDO - ROUND TUBE



Piedino fisso o regolabile
Fixed or adjustable foot

Q.tà minima per ordine = 10 kit
Minimum quantity = 10 kits

Dimensioni - Dimensions



Tavolo 3500

Lunghezza traversi A - B
Length of cross members A - B
 80
 100
 120
 140
 160
 180
 200

Tavolo 3700

Lunghezza traversi A	Lunghezza traversi B
<i>Length of cross members A</i>	<i>Length of cross members B</i>
120	80
140	80
160	80
180	80
200	80

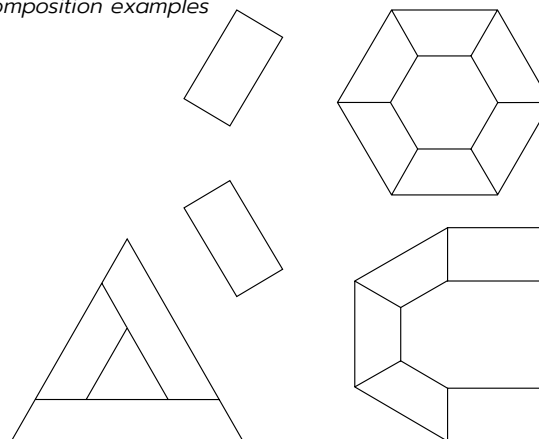


Particolare montato.
Assembled component.



Come si monta.
Assembly.

Esempi di composizioni *Composition examples*



certificazioni - certifications

EN 527-1/00
 Tavoli e scrivanie. Dimensioni
 Dimension

EN 527-2/02
 Requisiti generali di sicurezza
 General design requirements

EN 527-3/03
 Carico statico orizzontale
 Strength under horizontal force

Carico statico verticale
 Strength under vertical force

Resistenza a fatica orizzontale
 Fatigue under horizontal force

Resistenza a fatica verticale
 Fatigue under vertical force

Stabilità
 Stability

Caduta
 Drop Test

Collaudi eseguiti da
 Tests carried out by

